



## Epping Walk

Melksham SN12 7HW

- Bungalow
- Good Size Living Space
- Attractive Gardens
- Two Bedrooms
- Conservatory
- Ready To Move In

**Asking Price £270,000 Freehold**







## Porch

Door to side elevation and door to living room.

## Living Room

Window to front elevation, opening to kitchen, door to hall and radiator.

## Kitchen

Fitted with a matching range of base and eye level units with worktop space over, stainless steel sink, built in electric fan assisted oven, four ring electric hob with extractor hood over, space for washing machine and fridge/freezer, double doors to conservatory.

## Conservatory

Windows and patio doors to rear elevation and radiator.

## Hall

Doors to bedrooms and bathroom.

## Bedroom One

Window to front elevation and radiator.

## Bedroom Two

Window to rear elevation and radiator.



## Bathroom

Fitted with a three piece suite comprising of double shower with glass screen, wash hand basin and low level WC, window to rear elevation and heated towel rail.

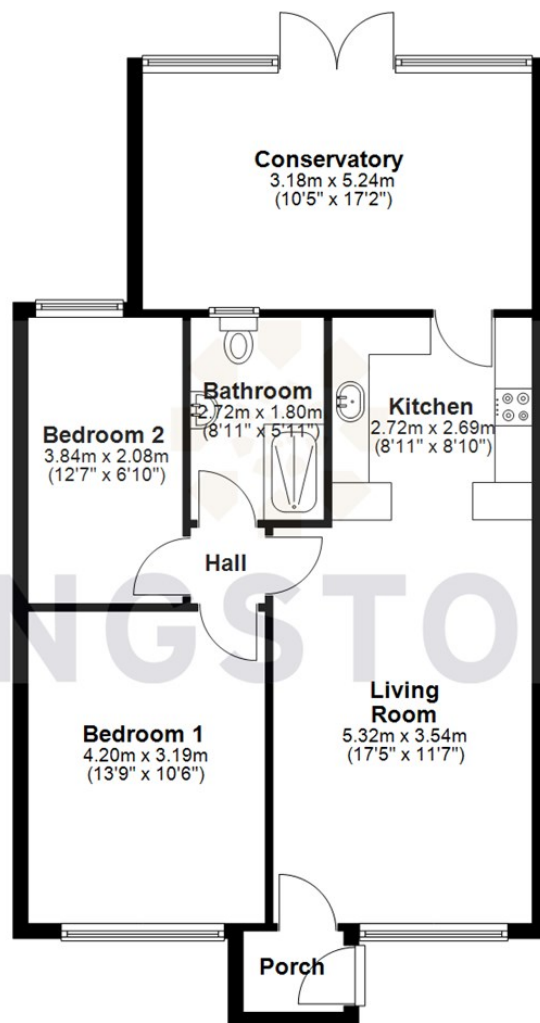
## Garden

Fully enclosed with rear and side access with areas of lawn, patio and mature rear border.





Local Authority  
Council Tax Band **C**  
EPC Rating **C**



KINGSTONS



**KINGSTONS**  
**Melksham Office**

11 High Street, Melksham,  
Wiltshire, SN12 6JR

Total area: approx. 74.2 sq. metres (799.1 sq. ft)

**Contact**

01225709115  
sales@kingstons.biz  
www.kingstons.biz

Agents Note: Whilst every care has been taken to prepare these particulars, they are for guidance purposes only. All measurements are approximate and for general guidance purposes only and whilst every care has been taken to ensure accuracy, they should not be relied upon and potential buyers/tenants are advised to recheck the measurements.

